

ERRATUM

Open Access



# Erratum to: Inequity in waiting for cataract surgery - an analysis of data from the Swedish National Cataract Register

Goldina Smirthwaite<sup>1\*</sup>, Mats Lundström<sup>2</sup>, Barbro Wijma<sup>3</sup>, Nina Lykke<sup>4</sup> and Katarina Swahnberg<sup>1</sup>

Unfortunately, after publication of this article [1], it was noticed that Figure 3 (Fig. 1 here) contained an error. The axis labels for the x axis allowed overlapping of the groups of data. The corrected figure can be seen below and the original article has been updated to reflect this change.

#### Author details

<sup>1</sup>Department of Health and Caring Sciences, Faculty of Health and Life Sciences, Linnaeus University, Kalmar 391 82, Sweden. <sup>2</sup>Department of Clinical Sciences, Ophthalmology, Faculty of Medicine, Lund University, Lund, Sweden. <sup>3</sup>Department of Clinical and Experimental Medicine, Faculty of Health Sciences, Linköping University, Linköping 581 83, Sweden. <sup>4</sup>Department of Gender Studies, Faculty of Arts & Sciences, Linköping University, Linköping 581 83, Sweden.

Received: 5 April 2016 Accepted: 6 April 2016

Published online: 11 April 2016

#### References

1. Smirthwaite G, Lundström M, Wijma B, Lykke N, Swahnberg K. Inequity in waiting for cataract surgery - an analysis of data from the Swedish National Cataract Register. *Int J Equity Health*. 2016;15:10. doi:10.1186/s12939-016-0302-3.

\* Correspondence: goldina.smirthwaite@lnu.se

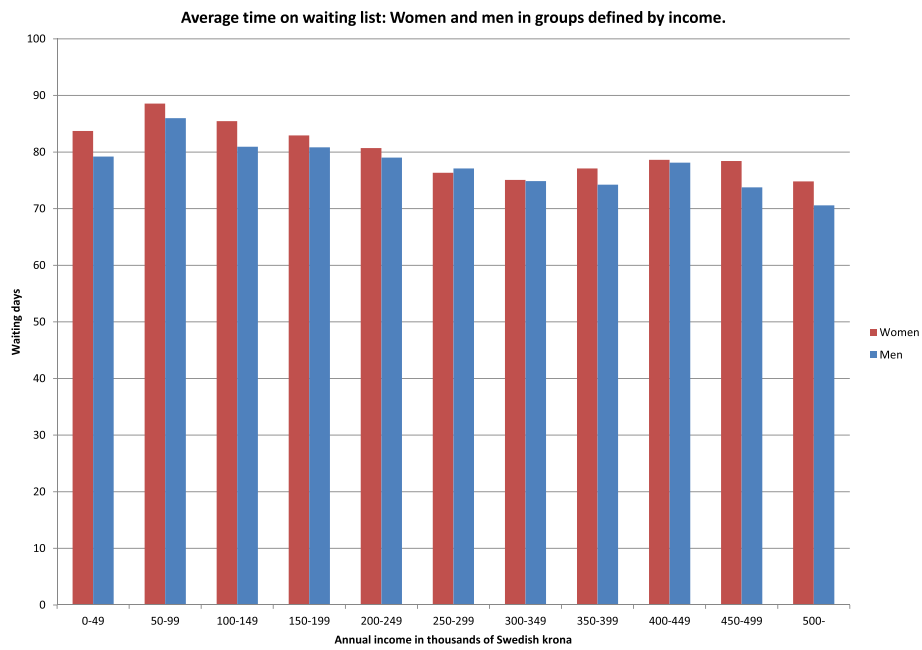
<sup>1</sup>Department of Health and Caring Sciences, Faculty of Health and Life Sciences, Linnaeus University, Kalmar 391 82, Sweden

Submit your next manuscript to BioMed Central and we will help you at every step:

- We accept pre-submission inquiries
- Our selector tool helps you to find the most relevant journal
- We provide round the clock customer support
- Convenient online submission
- Thorough peer review
- Inclusion in PubMed and all major indexing services
- Maximum visibility for your research

Submit your manuscript at  
[www.biomedcentral.com/submit](http://www.biomedcentral.com/submit)





**Fig. 1** Average time on waiting list Women and men in groups defined by income